



# SUSTAINABILITY INDEX LEAGUE TABLE



**CHAMPIONSHIP**

**FAIRGAME**

In the wider interests of football

# SUSTAINABILITY CHAMPIONSHIP INDEX LEAGUE TABLE

**LCP** powering possibility

RIGHT CLICK ON A TEAM AND  
DRILL THROUGH TO TEAM  
ANALYSIS

ALTERNATIVE  
COLOUR SCHEME

Club	Financial Sustainability	Governance Score	Fan Engagement	Equality Standards	Sustainability Index
Norwich City	29.20	23.03	15.50	2.86	70.58
Burnley	35.40	18.49	9.20	0.94	64.03
Swansea City	33.80	12.94	13.25	2.50	62.49
Sheffield United	34.00	13.99	8.30	0.71	57.00
Luton Town	29.00	14.70	11.90	0.00	55.60
Watford	25.70	17.51	5.60	2.81	51.63
Huddersfield Town	29.00	13.46	7.90	1.25	51.61
West Bromwich Albion	32.40	10.58	4.95	2.00	49.93
Sunderland	34.00	9.00	6.75	0.00	49.75
Millwall	26.00	11.10	11.05	0.00	48.15
Bristol City	24.50	12.15	7.45	0.00	46.60
Blackpool	23.20	12.68	7.85	0.00	43.73
Rotherham United	24.70	9.00	5.85	3.00	42.55
Reading	6.00	13.46	14.70	0.00	34.16
Hull City	10.00	11.63	7.05	0.00	28.68
Stoke City	3.20	14.51	7.90	3.00	28.61
Preston North End	10.00	12.94	4.80	0.00	27.74
Cardiff City	10.00	9.00	8.40	0.00	27.40
Coventry City	3.20	13.20	6.15	4.38	26.93
Birmingham City	6.00	11.89	5.70	0.00	23.59
Queens Park Rangers	1.00	10.05	9.70	2.00	22.75
Blackburn Rovers	0.00	12.15	8.40	1.00	21.55
Wigan Athletic	5.00	9.00	7.50	0.00	21.50
Middlesbrough	0.00	12.15	6.55	0.00	18.70



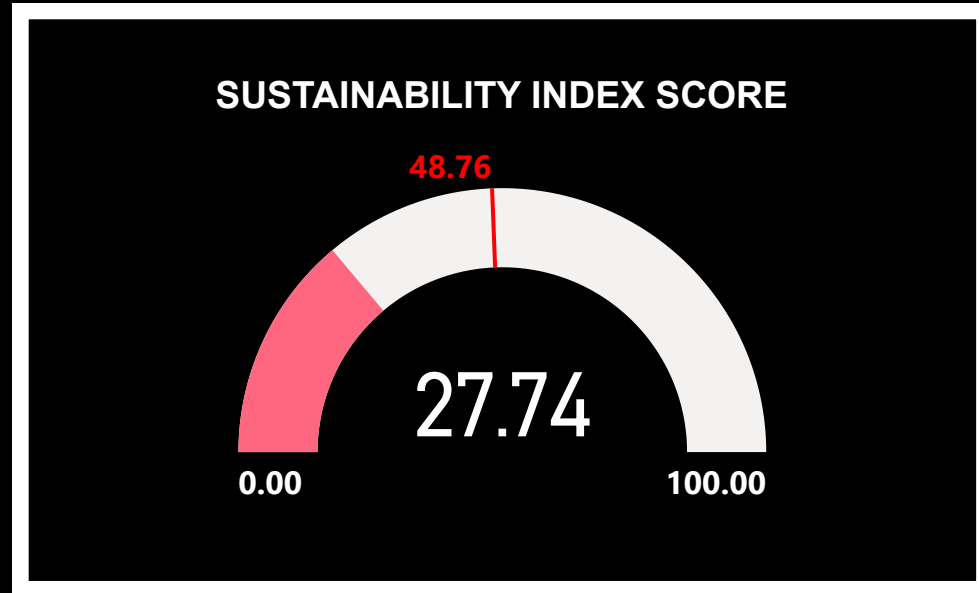
**FAIRGAME**

In the wider interests of football

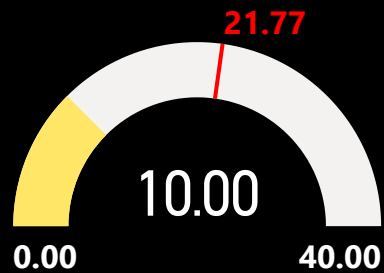
# SUSTAINABILITY INDEX TEAM ANALYSIS



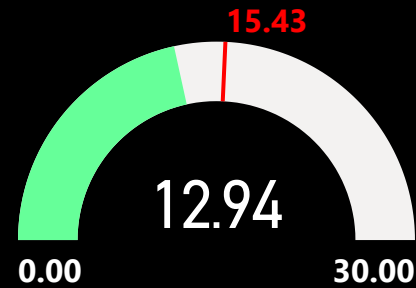
**Preston North End**



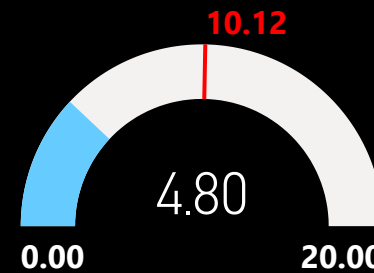
Financial Sustainability Score



Governance Score



Fan Engagement Score



Equality Standards Score



**FAIRGAME**

In the wider interests of football

# SUSTAINABILITY INDEX CHAMPIONSHIP LEAGUE TABLE

**LCP** powering possibility

RIGHT CLICK ON A TEAM AND  
DRILL THROUGH TO TEAM  
ANALYSIS



Club	Financial Sustainability	Governance Score	Fan Engagement	Equality Standards	Sustainability Index
Norwich City	29.20	23.03	15.50	2.86	70.58
Burnley	35.40	18.49	9.20	0.94	64.03
Swansea City	33.80	12.94	13.25	2.50	62.49
Sheffield United	34.00	13.99	8.30	0.71	57.00
Luton Town	29.00	14.70	11.90	0.00	55.60
Watford	25.70	17.51	5.60	2.81	51.63
Huddersfield Town	29.00	13.46	7.90	1.25	51.61
West Bromwich Albion	32.40	10.58	4.95	2.00	49.93
Sunderland	34.00	9.00	6.75	0.00	49.75
Millwall	26.00	11.10	11.05	0.00	48.15
Bristol City	24.50	12.15	7.45	0.00	46.60
Blackpool	23.20	12.68	7.85	0.00	43.73
Rotherham United	24.70	9.00	5.85	3.00	42.55
Reading	6.00	13.46	14.70	0.00	34.16
Hull City	10.00	11.63	7.05	0.00	28.68
Stoke City	3.20	14.51	7.90	3.00	28.61
Preston North End	10.00	12.94	4.80	0.00	27.74
Cardiff City	10.00	9.00	8.40	0.00	27.40
Coventry City	3.20	13.20	6.15	4.38	26.93
Birmingham City	6.00	11.89	5.70	0.00	23.59
Queens Park Rangers	1.00	10.05	9.70	2.00	22.75
Blackburn Rovers	0.00	12.15	8.40	1.00	21.55
Wigan Athletic	5.00	9.00	7.50	0.00	21.50
Middlesbrough	0.00	12.15	6.55	0.00	18.70



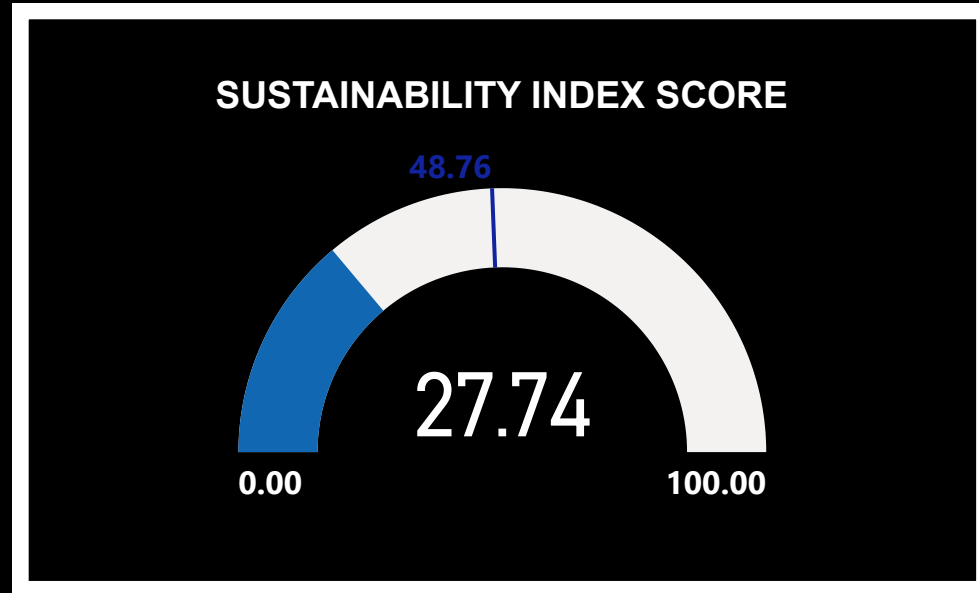
**FAIRGAME**

In the wider interests of football

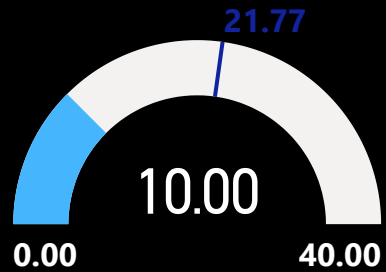
# SUSTAINABILITY INDEX TEAM ANALYSIS



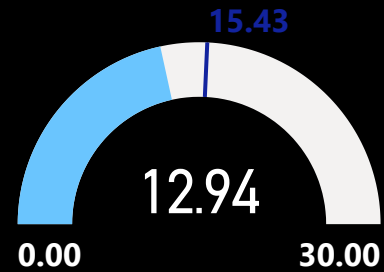
**Preston North End**



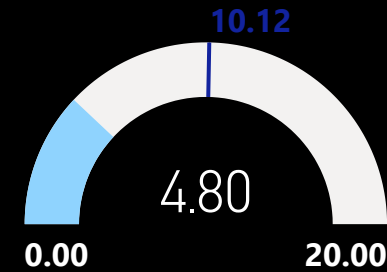
Financial Sustainability Score



Governance Score



Fan Engagement Score



Equality Standards Score

