



SUSTAINABILITY INDEX LEAGUE TABLE



CHAMPIONSHIP

FAIRGAME

In the wider interests of football

SUSTAINABILITY CHAMPIONSHIP INDEX LEAGUE TABLE

LCP powering possibility

RIGHT CLICK ON A TEAM AND
DRILL THROUGH TO TEAM
ANALYSIS

ALTERNATIVE
COLOUR SCHEME

Club	Financial Sustainability	Governance Score	Fan Engagement	Equality Standards	Sustainability Index
Norwich City	29.20	23.03	15.50	2.86	70.58
Burnley	35.40	18.49	9.20	0.94	64.03
Swansea City	33.80	12.94	13.25	2.50	62.49
Sheffield United	34.00	13.99	8.30	0.71	57.00
Luton Town	29.00	14.70	11.90	0.00	55.60
Watford	25.70	17.51	5.60	2.81	51.63
Huddersfield Town	29.00	13.46	7.90	1.25	51.61
West Bromwich Albion	32.40	10.58	4.95	2.00	49.93
Sunderland	34.00	9.00	6.75	0.00	49.75
Millwall	26.00	11.10	11.05	0.00	48.15
Bristol City	24.50	12.15	7.45	0.00	46.60
Blackpool	23.20	12.68	7.85	0.00	43.73
Rotherham United	24.70	9.00	5.85	3.00	42.55
Reading	6.00	13.46	14.70	0.00	34.16
Hull City	10.00	11.63	7.05	0.00	28.68
Stoke City	3.20	14.51	7.90	3.00	28.61
Preston North End	10.00	12.94	4.80	0.00	27.74
Cardiff City	10.00	9.00	8.40	0.00	27.40
Coventry City	3.20	13.20	6.15	4.38	26.93
Birmingham City	6.00	11.89	5.70	0.00	23.59
Queens Park Rangers	1.00	10.05	9.70	2.00	22.75
Blackburn Rovers	0.00	12.15	8.40	1.00	21.55
Wigan Athletic	5.00	9.00	7.50	0.00	21.50
Middlesbrough	0.00	12.15	6.55	0.00	18.70



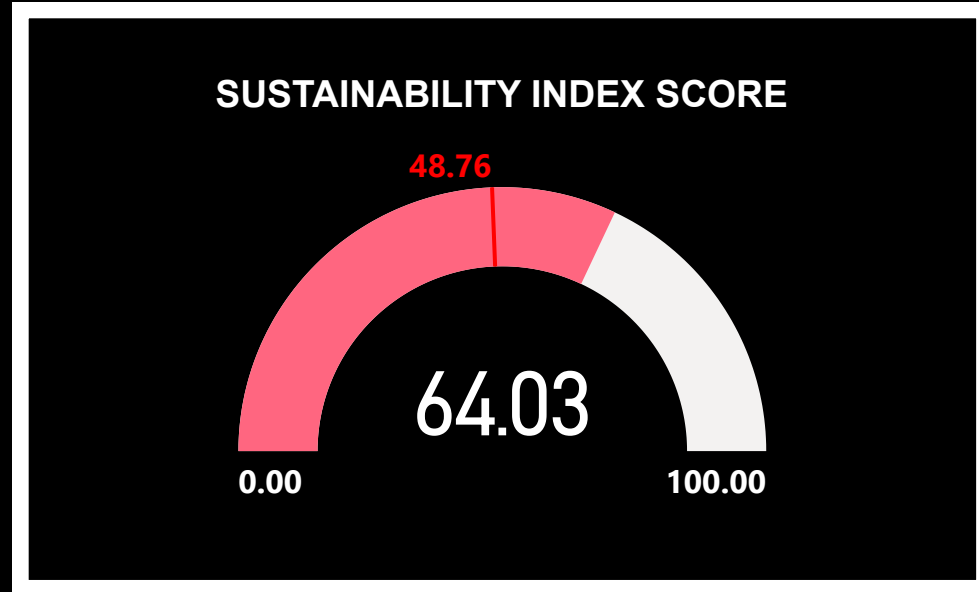
FAIRGAME

In the wider interests of football

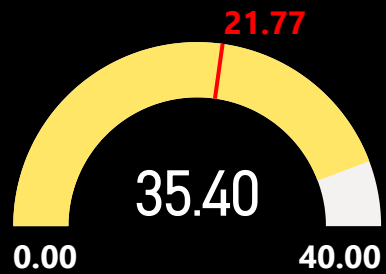
SUSTAINABILITY INDEX TEAM ANALYSIS



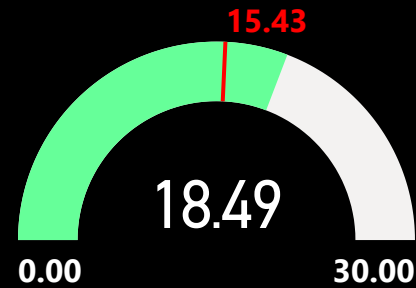
Burnley



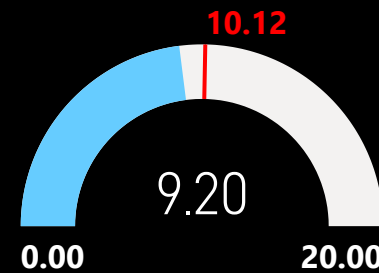
Financial Sustainability Score



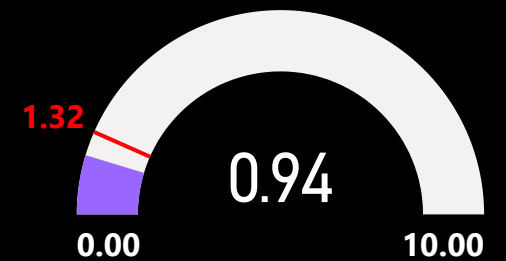
Governance Score



Fan Engagement Score



Equality Standards Score



FAIRGAME

In the wider interests of football

SUSTAINABILITY INDEX CHAMPIONSHIP LEAGUE TABLE

+LCP powering possibilityRIGHT CLICK ON A TEAM AND
DRILL THROUGH TO TEAM
ANALYSIS

Club	Financial Sustainability	Governance Score	Fan Engagement	Equality Standards	Sustainability Index
Norwich City	29.20	23.03	15.50	2.86	70.58
Burnley	35.40	18.49	9.20	0.94	64.03
Swansea City	33.80	12.94	13.25	2.50	62.49
Sheffield United	34.00	13.99	8.30	0.71	57.00
Luton Town	29.00	14.70	11.90	0.00	55.60
Watford	25.70	17.51	5.60	2.81	51.63
Huddersfield Town	29.00	13.46	7.90	1.25	51.61
West Bromwich Albion	32.40	10.58	4.95	2.00	49.93
Sunderland	34.00	9.00	6.75	0.00	49.75
Millwall	26.00	11.10	11.05	0.00	48.15
Bristol City	24.50	12.15	7.45	0.00	46.60
Blackpool	23.20	12.68	7.85	0.00	43.73
Rotherham United	24.70	9.00	5.85	3.00	42.55
Reading	6.00	13.46	14.70	0.00	34.16
Hull City	10.00	11.63	7.05	0.00	28.68
Stoke City	3.20	14.51	7.90	3.00	28.61
Preston North End	10.00	12.94	4.80	0.00	27.74
Cardiff City	10.00	9.00	8.40	0.00	27.40
Coventry City	3.20	13.20	6.15	4.38	26.93
Birmingham City	6.00	11.89	5.70	0.00	23.59
Queens Park Rangers	1.00	10.05	9.70	2.00	22.75
Blackburn Rovers	0.00	12.15	8.40	1.00	21.55
Wigan Athletic	5.00	9.00	7.50	0.00	21.50
Middlesbrough	0.00	12.15	6.55	0.00	18.70



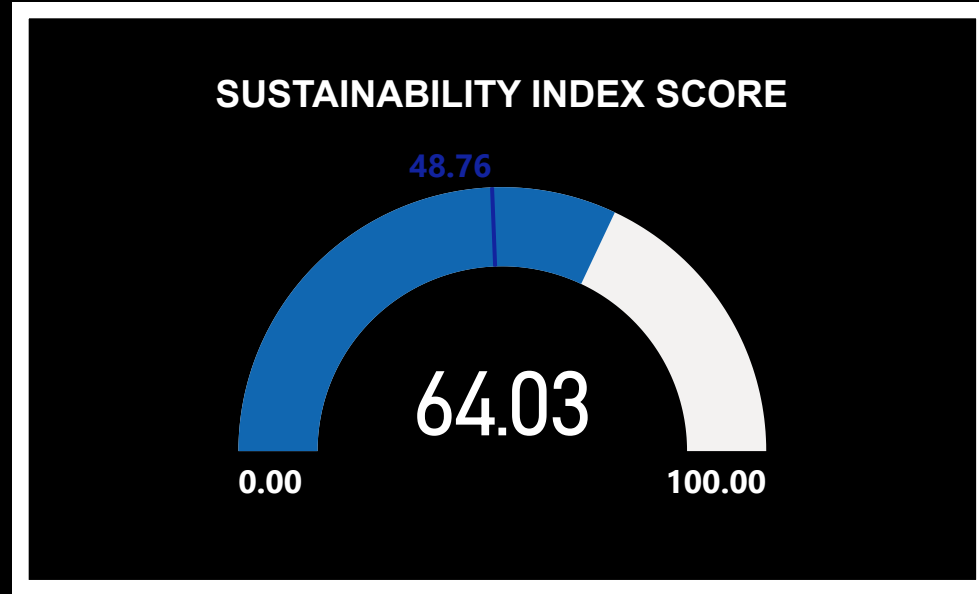
FAIRGAME

In the wider interests of football

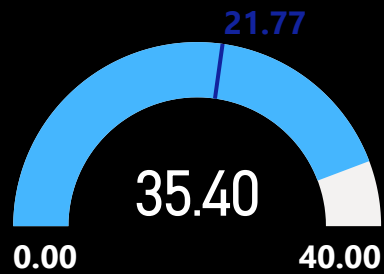
SUSTAINABILITY INDEX TEAM ANALYSIS



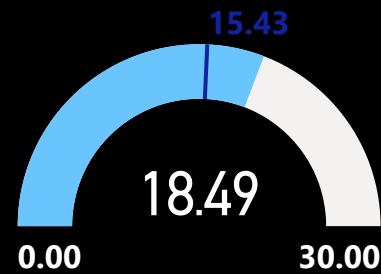
Burnley



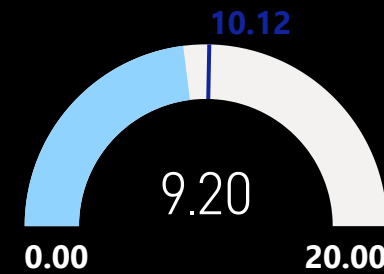
Financial Sustainability Score



Governance Score



Fan Engagement Score



Equality Standards Score

