



# SUSTAINABILITY INDEX LEAGUE TABLE



**CHAMPIONSHIP**

← **FAIRGAME**

In the wider interests of football

# SUSTAINABILITY CHAMPIONSHIP INDEX LEAGUE TABLE

+ **LCP** powering possibility

RIGHT CLICK ON A TEAM AND  
DRILL THROUGH TO TEAM  
ANALYSIS

ALTERNATIVE  
COLOUR SCHEME

| Club                 | Financial Sustainability | Governance Score | Fan Engagement | Equality Standards | Sustainability Index |
|----------------------|--------------------------|------------------|----------------|--------------------|----------------------|
| Norwich City         | 29.20                    | 23.03            | 15.50          | 2.86               | 70.58                |
| Burnley              | 35.40                    | 18.49            | 9.20           | 0.94               | 64.03                |
| Swansea City         | 33.80                    | 12.94            | 13.25          | 2.50               | 62.49                |
| Sheffield United     | 34.00                    | 13.99            | 8.30           | 0.71               | 57.00                |
| Luton Town           | 29.00                    | 14.70            | 11.90          | 0.00               | 55.60                |
| Watford              | 25.70                    | 17.51            | 5.60           | 2.81               | 51.63                |
| Huddersfield Town    | 29.00                    | 13.46            | 7.90           | 1.25               | 51.61                |
| West Bromwich Albion | 32.40                    | 10.58            | 4.95           | 2.00               | 49.93                |
| Sunderland           | 34.00                    | 9.00             | 6.75           | 0.00               | 49.75                |
| Millwall             | 26.00                    | 11.10            | 11.05          | 0.00               | 48.15                |
| Bristol City         | 24.50                    | 12.15            | 7.45           | 0.00               | 46.60                |
| Blackpool            | 23.20                    | 12.68            | 7.85           | 0.00               | 43.73                |
| Rotherham United     | 24.70                    | 9.00             | 5.85           | 3.00               | 42.55                |
| Reading              | 6.00                     | 13.46            | 14.70          | 0.00               | 34.16                |
| Hull City            | 10.00                    | 11.63            | 7.05           | 0.00               | 28.68                |
| Stoke City           | 3.20                     | 14.51            | 7.90           | 3.00               | 28.61                |
| Preston North End    | 10.00                    | 12.94            | 4.80           | 0.00               | 27.74                |
| Cardiff City         | 10.00                    | 9.00             | 8.40           | 0.00               | 27.40                |
| Coventry City        | 3.20                     | 13.20            | 6.15           | 4.38               | 26.93                |
| Birmingham City      | 6.00                     | 11.89            | 5.70           | 0.00               | 23.59                |
| Queens Park Rangers  | 1.00                     | 10.05            | 9.70           | 2.00               | 22.75                |
| Blackburn Rovers     | 0.00                     | 12.15            | 8.40           | 1.00               | 21.55                |
| Wigan Athletic       | 5.00                     | 9.00             | 7.50           | 0.00               | 21.50                |
| Middlesbrough        | 0.00                     | 12.15            | 6.55           | 0.00               | 18.70                |



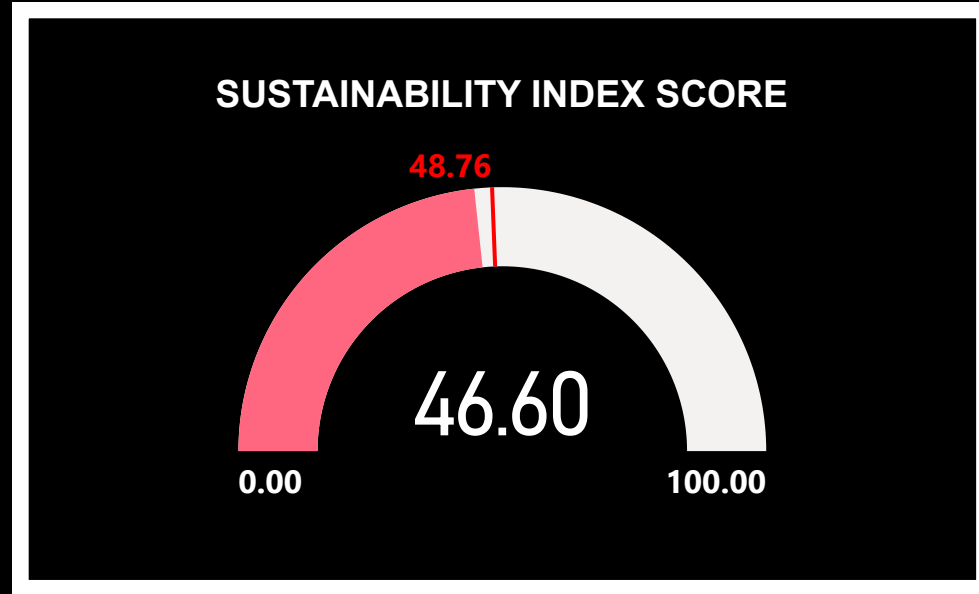
**FAIRGAME**

In the wider interests of football

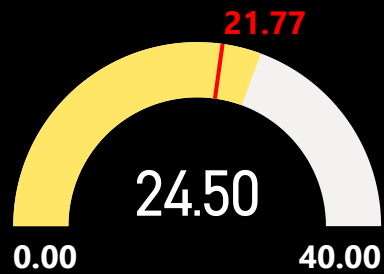
# SUSTAINABILITY INDEX TEAM ANALYSIS



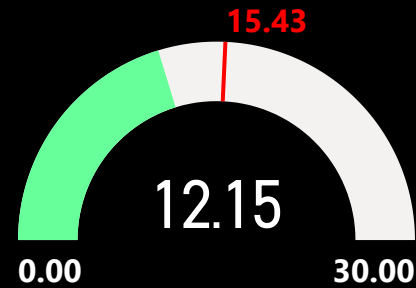
**Bristol City**



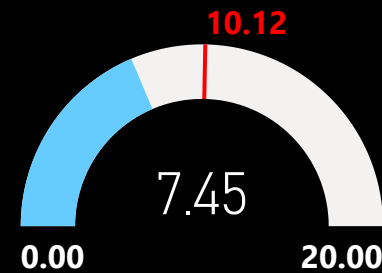
Financial Sustainability Score



Governance Score



Fan Engagement Score



Equality Standards Score



# SUSTAINABILITY INDEX CHAMPIONSHIP LEAGUE TABLE

RIGHT CLICK ON A TEAM AND  
DRILL THROUGH TO TEAM  
ANALYSIS



| Club                 | Financial Sustainability | Governance Score | Fan Engagement | Equality Standards | Sustainability Index |
|----------------------|--------------------------|------------------|----------------|--------------------|----------------------|
| Norwich City         | 29.20                    | 23.03            | 15.50          | 2.86               | 70.58                |
| Burnley              | 35.40                    | 18.49            | 9.20           | 0.94               | 64.03                |
| Swansea City         | 33.80                    | 12.94            | 13.25          | 2.50               | 62.49                |
| Sheffield United     | 34.00                    | 13.99            | 8.30           | 0.71               | 57.00                |
| Luton Town           | 29.00                    | 14.70            | 11.90          | 0.00               | 55.60                |
| Watford              | 25.70                    | 17.51            | 5.60           | 2.81               | 51.63                |
| Huddersfield Town    | 29.00                    | 13.46            | 7.90           | 1.25               | 51.61                |
| West Bromwich Albion | 32.40                    | 10.58            | 4.95           | 2.00               | 49.93                |
| Sunderland           | 34.00                    | 9.00             | 6.75           | 0.00               | 49.75                |
| Millwall             | 26.00                    | 11.10            | 11.05          | 0.00               | 48.15                |
| Bristol City         | 24.50                    | 12.15            | 7.45           | 0.00               | 46.60                |
| Blackpool            | 23.20                    | 12.68            | 7.85           | 0.00               | 43.73                |
| Rotherham United     | 24.70                    | 9.00             | 5.85           | 3.00               | 42.55                |
| Reading              | 6.00                     | 13.46            | 14.70          | 0.00               | 34.16                |
| Hull City            | 10.00                    | 11.63            | 7.05           | 0.00               | 28.68                |
| Stoke City           | 3.20                     | 14.51            | 7.90           | 3.00               | 28.61                |
| Preston North End    | 10.00                    | 12.94            | 4.80           | 0.00               | 27.74                |
| Cardiff City         | 10.00                    | 9.00             | 8.40           | 0.00               | 27.40                |
| Coventry City        | 3.20                     | 13.20            | 6.15           | 4.38               | 26.93                |
| Birmingham City      | 6.00                     | 11.89            | 5.70           | 0.00               | 23.59                |
| Queens Park Rangers  | 1.00                     | 10.05            | 9.70           | 2.00               | 22.75                |
| Blackburn Rovers     | 0.00                     | 12.15            | 8.40           | 1.00               | 21.55                |
| Wigan Athletic       | 5.00                     | 9.00             | 7.50           | 0.00               | 21.50                |
| Middlesbrough        | 0.00                     | 12.15            | 6.55           | 0.00               | 18.70                |



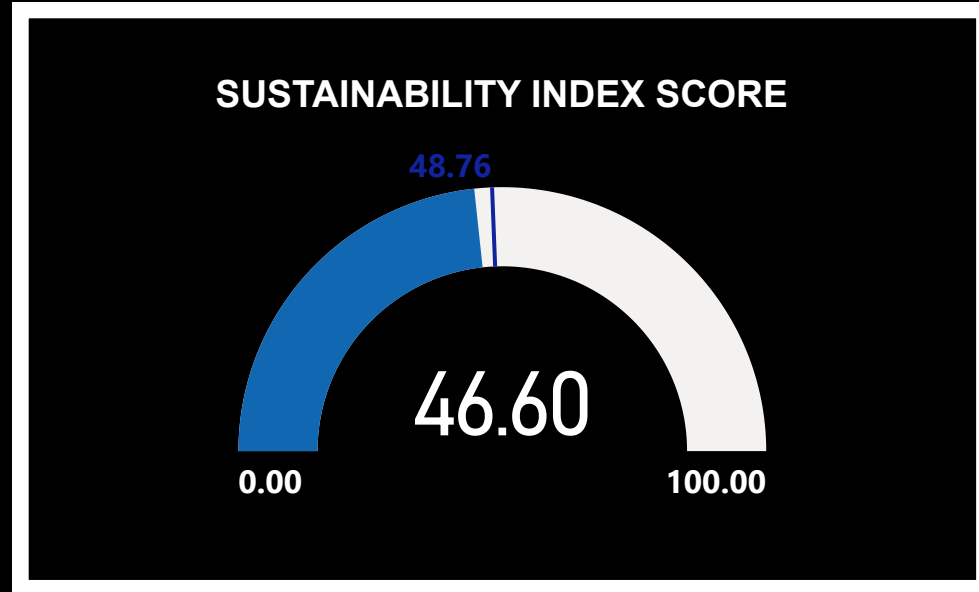
**FAIRGAME**

In the wider interests of football

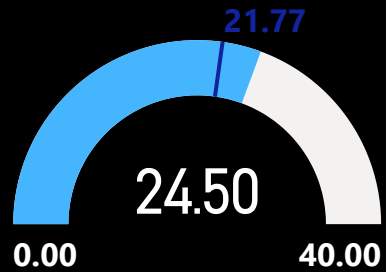
# SUSTAINABILITY INDEX TEAM ANALYSIS



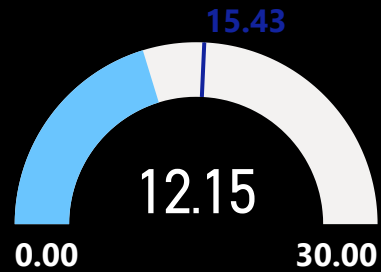
**Bristol City**



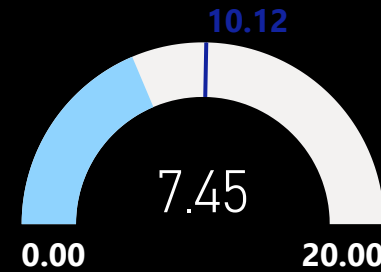
**Financial Sustainability Score**



**Governance Score**



**Fan Engagement Score**



**Equality Standards Score**

